



(12) **United States Patent**
Lunt

(10) **Patent No.:** **US 9,100,400 B2**
(45) **Date of Patent:** ***Aug. 4, 2015**

(54) **AUTHORIZATION AND AUTHENTICATION
BASED ON AN INDIVIDUAL'S SOCIAL
NETWORK**

(58) **Field of Classification Search**
None
See application file for complete search history.

(75) Inventor: **Christopher Lunt**, Mountain View, CA (US)

(56) **References Cited**

(73) Assignee: **Facebook, Inc.**, Menlo Park, CA (US)

U.S. PATENT DOCUMENTS

(*) Notice: Subject to any disclaimer, the term of this patent is extended or adjusted under 35 U.S.C. 154(b) by 0 days.

This patent is subject to a terminal disclaimer.

5,950,200	A	9/1999	Sudai
5,963,951	A	10/1999	Collins
5,978,768	A	11/1999	McGovern
6,052,122	A	4/2000	Sutcliffe
6,061,681	A	5/2000	Collins
6,073,105	A	6/2000	Sutcliffe
6,073,138	A	6/2000	de l'Etraz
6,175,831	B1	1/2001	Weinrich

(Continued)

(21) Appl. No.: **13/565,500**

FOREIGN PATENT DOCUMENTS

(22) Filed: **Aug. 2, 2012**

EP	1 085 707	3/2001
EP	1 782 604	5/2011

(Continued)

(65) **Prior Publication Data**

US 2012/0311680 A1 Dec. 6, 2012

OTHER PUBLICATIONS

Related U.S. Application Data

Dziengel et al., "Energy-Aware Distributed Fence Surveillance for Wireless Sensor Networks," 2011, IEEE, p. 353-358.*

(63) Continuation of application No. 10/897,766, filed on Jul. 22, 2004, now Pat. No. 8,302,164.

(Continued)

(51) **Int. Cl.**
G06F 7/04 (2006.01)
G06F 17/30 (2006.01)
H04L 29/06 (2006.01)
H04L 12/58 (2006.01)
G06F 21/31 (2013.01)
G06Q 50/00 (2012.01)
H04L 29/08 (2006.01)

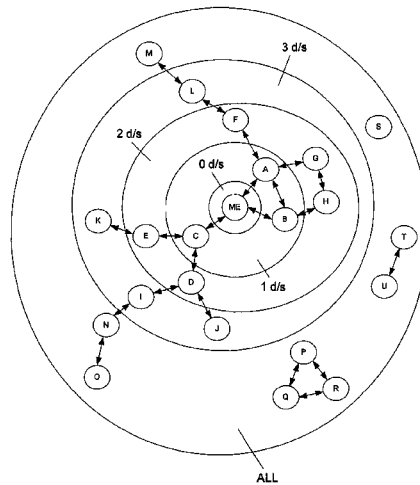
Primary Examiner — Eleni Shiferaw
Assistant Examiner — Demaris Brown
(74) *Attorney, Agent, or Firm* — Baker Botts L.L.P.

(52) **U.S. Cl.**
CPC **H04L 63/10** (2013.01); **G06F 21/31** (2013.01); **G06Q 50/01** (2013.01); **H04L 12/585** (2013.01); **H04L 51/12** (2013.01); **H04L 63/08** (2013.01); **H04L 67/32** (2013.01); **H04L 63/101** (2013.01); **H04L 67/306** (2013.01)

(57) **ABSTRACT**

In particular embodiments, a method includes accessing a graph structure comprising a plurality of nodes and edges where each node represents a user, receiving a request to transmit content related to a first user to a second user, and prohibiting transmission of the content to the second user if the first user and the second user are connected in the graph structure through a series of edges and nodes that comprises an unauthorized node.

16 Claims, 8 Drawing Sheets



(56)

References Cited

U.S. PATENT DOCUMENTS

6,249,282	B1	6/2001	Sutcliffe	
6,269,369	B1	7/2001	Robertson	
6,324,541	B1	11/2001	de l'Etraz	
6,363,427	B1	3/2002	Teibel	
6,366,962	B1	4/2002	Teibel	
6,370,510	B1	4/2002	McGovern	
6,408,309	B1	6/2002	Agarwal	
6,542,748	B2	4/2003	Hendrey	
6,735,568	B1	5/2004	Buckwalter	
7,016,307	B2*	3/2006	Vasudev et al.	370/238
7,069,308	B2	6/2006	Abrams	
7,478,078	B2	1/2009	Lunt	
7,546,338	B2	6/2009	Schran	
7,580,981	B1*	8/2009	Golub	709/206
7,613,776	B1	11/2009	Ben-Yoseph	
7,644,166	B2*	1/2010	Appelman et al.	709/229
7,653,693	B2	1/2010	Heikes	
7,958,377	B2*	6/2011	Lee et al.	713/193
8,010,458	B2	8/2011	Galbreath	
8,291,477	B2	10/2012	Lunt	
8,302,164	B2	10/2012	Lunt	
2002/0032658	A1*	3/2002	Oki et al.	705/51
2002/0086676	A1	7/2002	Hendrey	
2002/0087466	A1	7/2002	Fais	
2002/0124053	A1	9/2002	Adams	
2002/0196159	A1	12/2002	Lesenne	
2003/0050970	A1	3/2003	Akiyama	
2003/0078972	A1	4/2003	Tapissier	
2003/0097597	A1	5/2003	Lewis	
2003/0154194	A1	8/2003	Jonas	
2003/0167308	A1	9/2003	Schran	
2004/0003071	A1	1/2004	Mathew	
2004/0034601	A1	2/2004	Kreuzer	
2004/0053622	A1*	3/2004	Nakakita et al.	455/450
2004/0064734	A1	4/2004	Ehrlich	
2004/0068667	A1*	4/2004	Kumhyr et al.	713/201
2004/0088325	A1	5/2004	Elder	
2004/0122803	A1	6/2004	Dom	
2004/0122855	A1	6/2004	Ruvolo	
2004/0144301	A1	7/2004	Neudeck	
2004/0148275	A1*	7/2004	Achlioptas	707/3
2004/0177122	A1*	9/2004	Appelman et al.	709/206
2004/0205126	A1	10/2004	Ben-Yoseph	
2004/0210639	A1	10/2004	Ben-Yoseph	
2004/0215648	A1	10/2004	Marshall	
2004/0215793	A1*	10/2004	Ryan et al.	709/229
2004/0255032	A1*	12/2004	Danieli	709/229
2005/0026696	A1	2/2005	Hashimoto	
2005/0055416	A1	3/2005	Heikes	
2005/0076241	A1*	4/2005	Appelman	713/201
2005/0097170	A1*	5/2005	Zhu et al.	709/204
2005/0097319	A1	5/2005	Zhu	
2005/0144279	A1	6/2005	Wexelblat	
2005/0149606	A1	7/2005	Lyle	
2005/0197846	A1	9/2005	Pezaris	
2005/0198031	A1	9/2005	Pezaris	
2005/0209999	A1	9/2005	Jou	
2005/0216300	A1	9/2005	Appelman	
2005/0246420	A1	11/2005	Little, II	
2005/0256866	A1	11/2005	Lu	
2005/0267940	A1*	12/2005	Galbreath et al.	709/206
2005/0273378	A1	12/2005	MacDonald-Korth	
2006/0031313	A1	2/2006	Libbey, IV	
2006/0168006	A1*	7/2006	Shannon et al.	709/206
2007/0214001	A1	9/2007	Patron	
2008/0082541	A1	4/2008	Davidson	
2009/0016499	A1	1/2009	Hullfish	
2009/0041244	A1*	2/2009	Lee et al.	380/259
2009/0112827	A1	4/2009	Achlioptas	
2010/0180032	A1	7/2010	Lunt	
2011/0003594	A1*	1/2011	Cooper	455/436

FOREIGN PATENT DOCUMENTS

WO WO 03/030051 4/2003
 WO WO 2006/019752 2/2006

OTHER PUBLICATIONS

Fabbri et al., "Policy Replay: Misconfiguration-Response Queries for Data Breach Reporting," Sep. 2010, ACM, p. 36-47.*
 Johnson et al., "Software Piracy: Stopping It Before It Stops You," Oct. 1988, ACM, p. 1-5.*
 Viani et al., "A Multi-Sensor WSN Backbone for Museum Monitoring and Surveillance," 2012, IEEE, p. 51-52.*
 European Search Report for EP 10182314.4, Nov. 17, 2010.
 Notice of Opposition to European Patent EP 1782604, Feb. 16, 2012.
 Mike Martin, "Can Social Networking Stop Spam?" *Sci-Tech Today*, http://www.sci-tech-today.com/story.xhtml?story_id=23355, Mar. 2004.
 J. Rosenberg et al., "The Session Initiation Protocol (SIP) and Spam," *Internet Engineering Task Force*, Jul. 2004: pp. 1-19. *Soft Armor Systems*, Nov. 10, 2005, <http://www.softarmor.com/wgdb/docs/draft-rosenberg-sipping-spam-00.txt>.
 U.S. Appl. No. 13/565,475, filed Aug. 2, 2012, Lunt.
 U.S. Appl. No. 13,565,523, filed Aug. 2, 2012, Lunt.
 U.S. Appl. No. 13/565,550, filed Aug. 2, 2012, Lunt.
 PCT Invitation to Pay Additional Fees and Communication Relating to the Results of the Partial International Search for PCT/US2005/024741, Oct. 25, 2005.
 Office Action for Patent Application EP 05 771 078.2, Mar. 31, 2010. 3rd Generation Partnership Project; Technical Specification Group Services and System Aspects; International Mobile station Equipment Identities (IMEI)(Release 5) 3GPP TS 22.016 V5.0.0, Jun. 2002.
 Breslin et al., "The Future of Social Networks on the Internet—The Need for Semantics," IEEE, pp. 86-90, 2007.
 Boykin et al., "Leveraging Social Networks to Fight Spam," IEEE, pp. 61-69, 2005.
 Zhou et al., "Preserving Privacy in Social Networks Against Neighborhood Attacks," IEEE, pp. 506-516, 2008.
 European Summons to Attend Oral Proceedings and Summons for Application for EP 05771078.2, Nov. 18, 2013.

* cited by examiner

FIG. 1

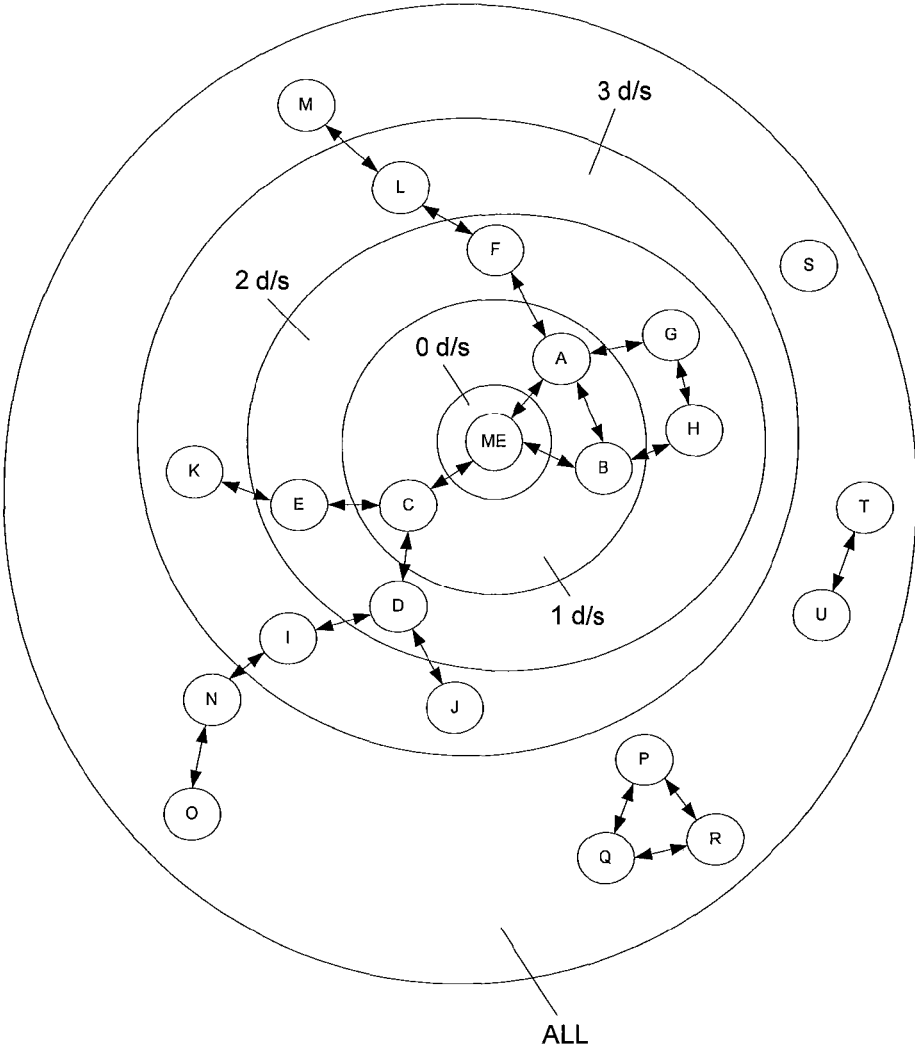


FIG. 2

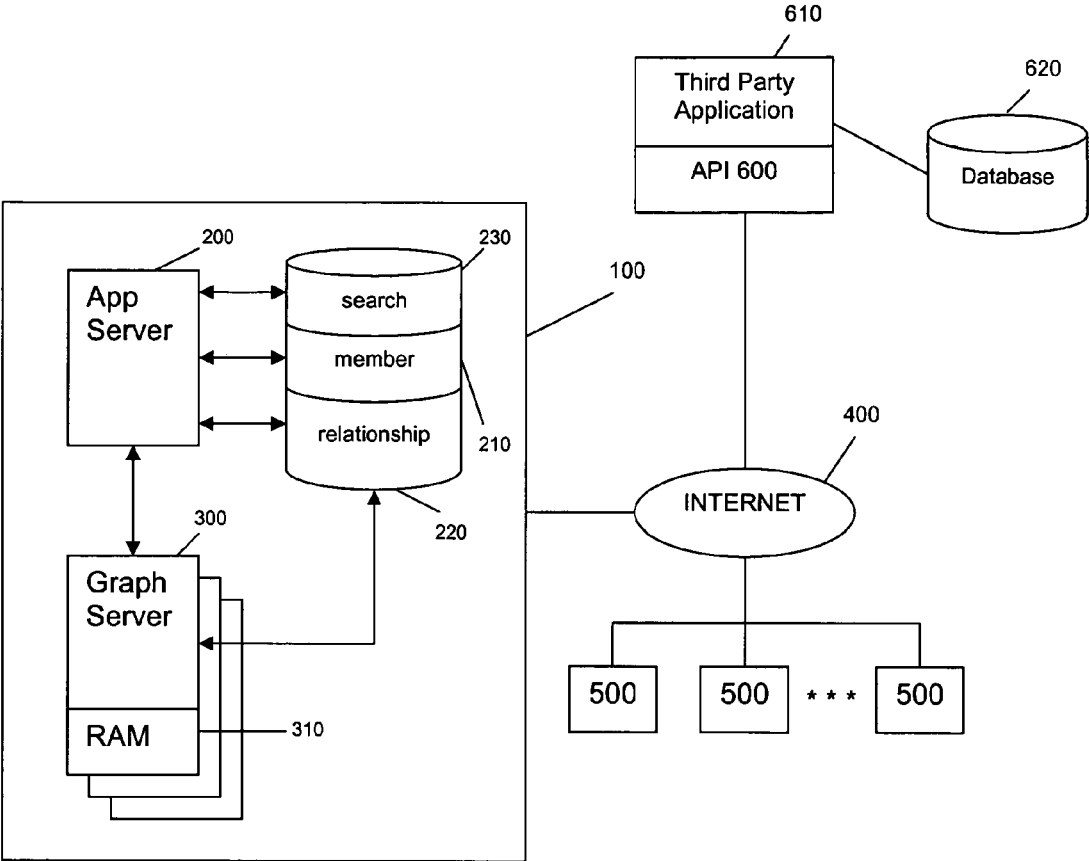


FIG. 3

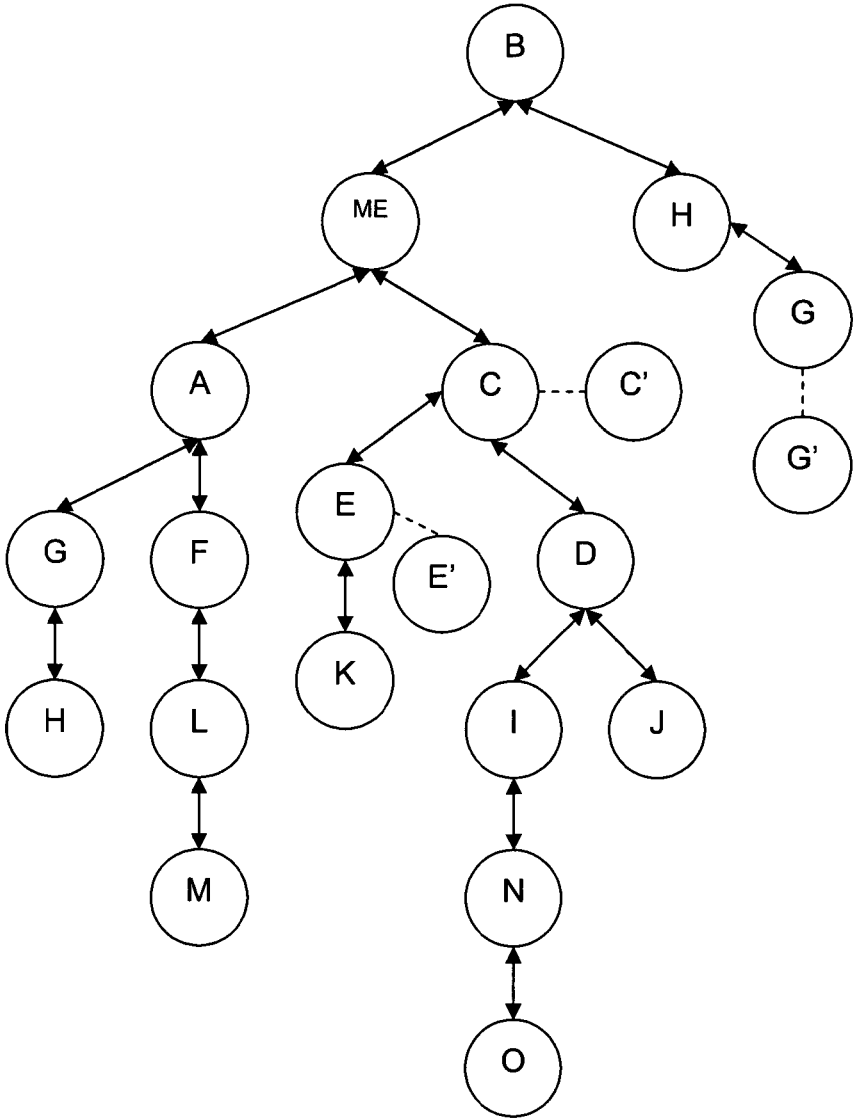


FIG. 4

B's Black List
D
L

FIG. 5

B's Gray List
C
I
J
F
M

FIG. 6

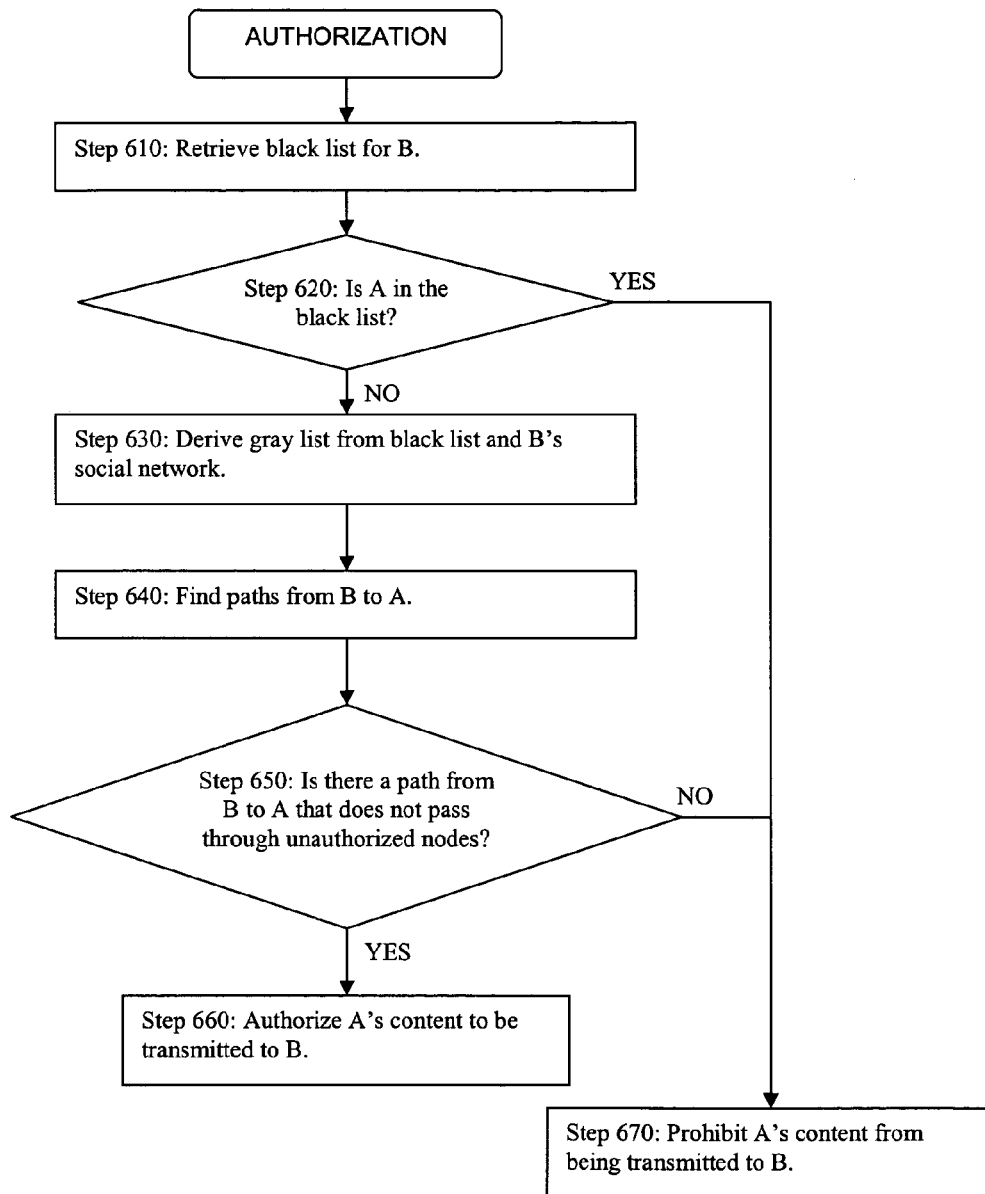


FIG. 7

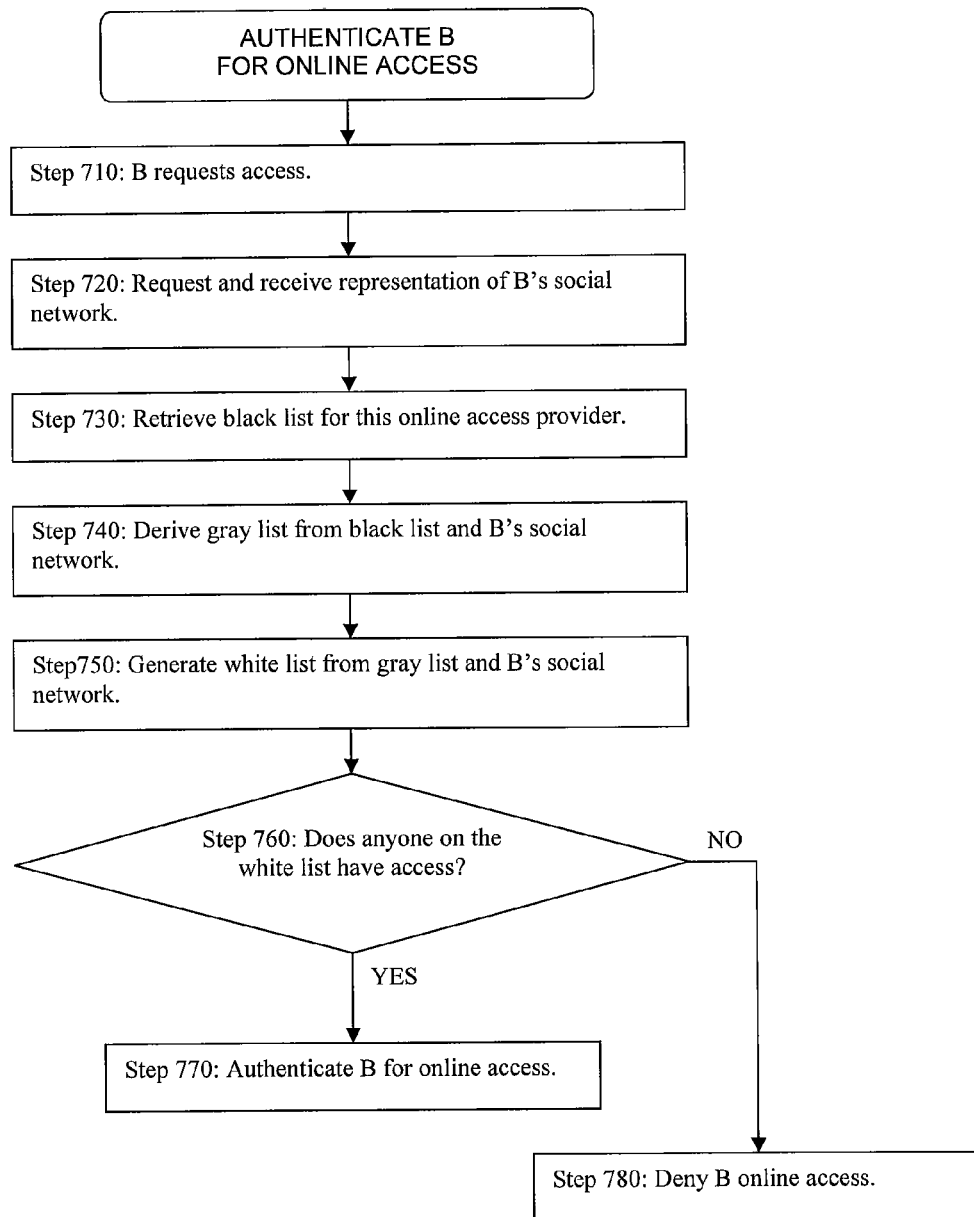
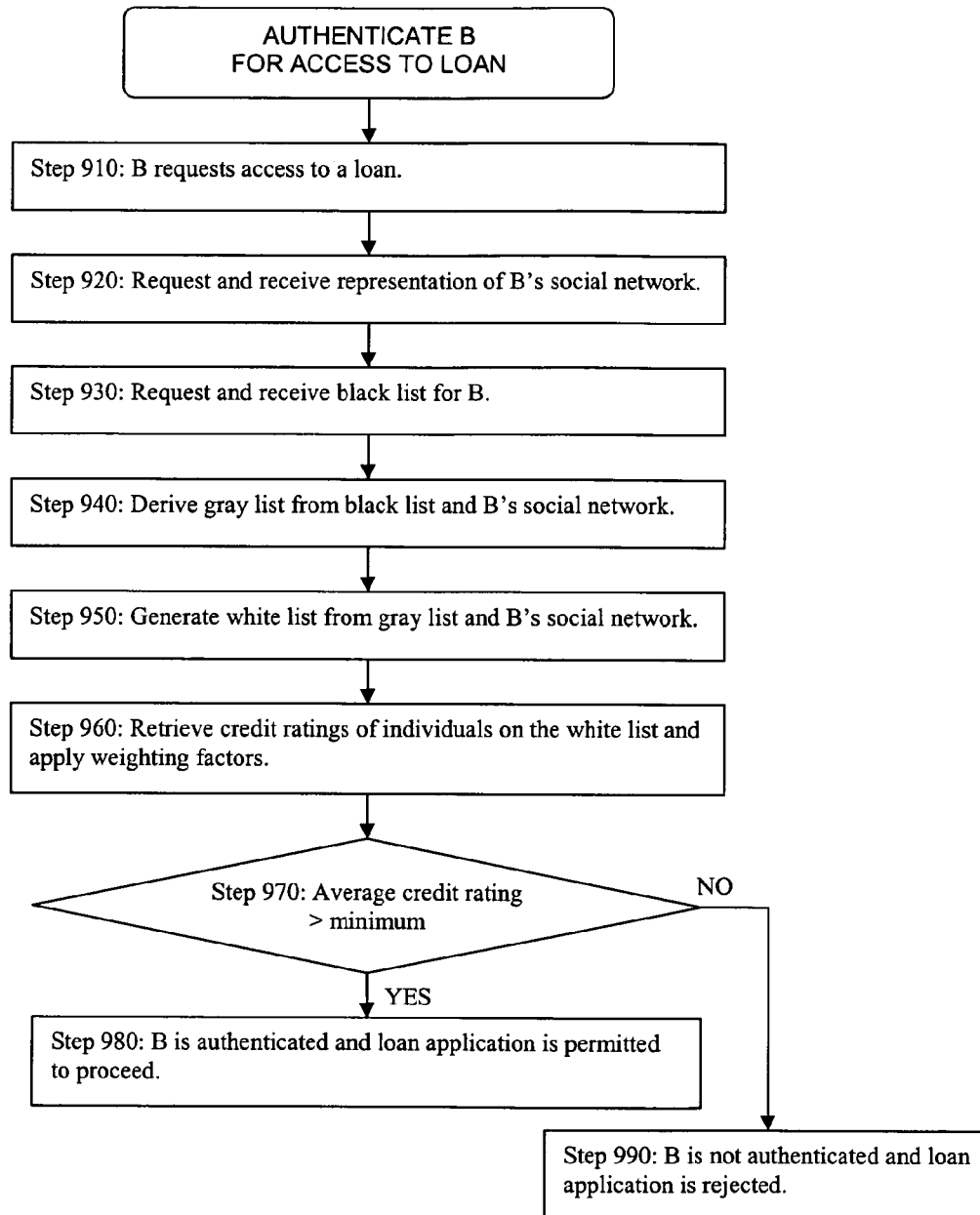


FIG. 8

B's White List
ME A C F G H

FIG. 9



1

AUTHORIZATION AND AUTHENTICATION BASED ON AN INDIVIDUAL'S SOCIAL NETWORK

CROSS-REFERENCE TO RELATED APPLICATIONS

This application is a continuation under 35 U.S.C. §120 of U.S. patent application Ser. No. 10/897,766, filed Jul. 22, 2004.

BACKGROUND OF THE INVENTION

1. Field of the Invention

The present invention generally relates to authorizing activities and authenticating individuals, and more specifically, to methods for authorizing information flow to an individual and authenticating an individual for access to information or service based on that individual's social network.

2. Description of the Related Art

One of the major benefits of the Internet has been the ease of communicating information to a large number of people. Some users have, however, been abusing this benefit by sending unwanted e-mail solicitations, known as SPAM, to individuals over the Internet. The problem with SPAM has become so pervasive that some states have passed legislation prohibiting SPAM.

Further, the open nature of the Internet has caused providers of content and service over the Internet to place controls on who may access its content or service. The controls are sometimes unnecessarily restrictive and the processes used to grant access tend to be overly cumbersome, to the detriment of both users who might have benefited from the content or service and providers who might have benefited from revenues generated from these users.

SUMMARY OF THE INVENTION

The invention provides a method of authorizing transmission of content to an individual as a way to filter out unwanted communication such as SPAM or content that the individual might find to be offensive, and a method of authenticating individuals for access to content or service that makes the content or service available to more users while limiting access to potentially abusive users of the content or service. In particular, a service provider examines an individual's social network and a black list of persons that have been determined to be untrustworthy to determine whether to authorize transmission of content to that individual or authenticate that individual for access to information or service.

In a first embodiment of the invention, the authorization is performed in connection with an e-mail communication service. When an e-mail communication with an individual is attempted, that individual's social network is searched for a path between the sender and the individual. If the path exists and the path does not traverse through unauthorized nodes, the e-mail communication is authorized. If there is no such path, the e-mail communication is prohibited.

In a second embodiment of the invention, the authorization is performed in connection with a search. When an individual enters a search query, the search engine retrieves relevant search results for delivery to the individual. The search results that are delivered to the individual do not include content posted by those persons who are not connected to the individual in the individual's social network through authorized nodes.

2

In a third embodiment of the invention, the service provider is a third party content provider. When an individual requests access to the content provided by this entity, the entity examines its user base to determine if any of its users is related to this individual. If there is a relationship and the individual and the related user are connected through authorized nodes, the individual is given access. If not, access is denied to the individual.

In a fourth embodiment of the invention, the service provider is a lender. When an individual applies for a loan, the lender examines the credit ratings of members of the individual's social network who are connected to the individual through authorized nodes. If the average credit rating of these members is at least a minimum credit score, the lender continues to process the loan application. Otherwise, the loan application is rejected.

BRIEF DESCRIPTION OF THE DRAWINGS

So that the manner in which the above recited features of the present invention can be understood in detail, a more particular description of the invention, briefly summarized above, may be had by reference to embodiments, some of which are illustrated in the appended drawings. It is to be noted, however, that the appended drawings illustrate only typical embodiments of this invention and are therefore not to be considered limiting of its scope, for the invention may admit to other equally effective embodiments.

FIG. 1 is a diagram illustrating the relationships between members in a social network.

FIG. 2 is a block diagram illustrating a system for providing relationship information from a social network to an existing database.

FIG. 3 is a representation of the social network of FIG. 1 in a tree format.

FIG. 4 is a sample black list used in the invention.

FIG. 5 is a sample gray list used in the invention.

FIG. 6 is a flow diagram that illustrates the steps carried out in authorizing transmission of content to an individual.

FIG. 7 is a flow diagram that illustrates the steps carried out in authenticating an individual for online access.

FIG. 8 is a sample white list used in the invention.

FIG. 9 is a flow diagram that illustrates the steps carried out in authenticating an individual for access to a loan.

DETAILED DESCRIPTION

A social network is generally defined by the relationships among groups of individuals, and may include relationships ranging from casual acquaintances to close familial bonds. A social network may be represented using a graph structure. Each node of the graph corresponds to a member of the social network. Edges connecting two nodes represent a relationship between two individuals. In addition, the degree of separation between any two nodes is defined as the minimum number of hops required to traverse the graph from one node to the other. A degree of separation between two members is a measure of relatedness between the two members.

FIG. 1 illustrates a graph representation of a social network centered on a given individual (ME). Other members of this social network include A-U whose position, relative to ME's, is referred to by the degree of separation between ME and each other member. Friends of ME, which includes A, B, and C, are separated from ME by one degree of separation (1 d/s). A friend of a friend of ME is separated from ME by 2 d/s. As shown, D, E, F and G are each separated from ME by 2 d/s. A friend of a friend of a friend of ME is separated from ME by

3 d/s. FIG. 1 depicts all nodes separated from ME by more than 3 degrees of separation as belonging to the category ALL.

Degrees of separation in a social network are defined relative to an individual. For example, in ME's social network, H and ME are separated by 2 d/s, whereas in G's social network, H and G are separated by only 1 d/s. Accordingly, each individual will have their own set of first, second and third degree relationships.

As those skilled in the art understand, an individual's social network may be extended to include nodes to an Nth degree of separation. As the number of degrees increases beyond three, however, the number of nodes typically grows at an explosive rate and quickly begins to mirror the ALL set.

FIG. 2 is a block diagram illustrating a system for creating and managing an online social network. As shown, FIG. 2 illustrates a system 100, including an application server 200 and graph servers 300. The computers of system 100 are connected by a network 400, e.g., the Internet, and accessible by over the network by a plurality of computers, collectively designated as 500. The application server 200 manages a member database 210, a relationship database 220, and a search database 230.

The member database 210 contains profile information for each of the members in the online social network managed by the system 100. The profile information may include, among other things: a unique member identifier, name, age, gender, location, hometown, references to image files, listing of interests, attributes, and the like. The profile information also includes VISIBILITY and CONTACTABILITY settings, the uses of which are described in a commonly owned application, "System and Method for Managing Information Flow Between Members of an Online Social Network," (U.S. patent application Ser. No. 10/854,057, issued as U.S. Pat. No. 8,010,458), filed May 26, 2004, the contents of which are hereby incorporated by reference. The relationship database 220 stores information defining to the first degree relationships between members. The relationship database 220 stores information relating to the first degree relationships between members. In addition, the contents of the member database 210 are indexed and optimized for search, and stored in the search database 230. The member database 210, the relationship database 220, and the search database 230 are updated to reflect inputs of new member information and edits of existing member information that are made through the computers 500.

The application server 200 also manages the information exchange requests that it receives from the remote computers 500. The graph servers 300 receive a query from the application server 200, process the query and return the query results to the application server 200. The graph servers 300 manage a representation of the social network for all the members in the member database 210. The graph servers 300 and related components are described in detail in a commonly owned application, "System and Method for Managing an Online Social Network," (U.S. patent application Ser. No. 10/854,054, issued as U.S. Pat. No. 8,572,221), filed May 26, 2004, the contents of which are hereby incorporated by reference.

Graph servers 300 store a graph representation of the social network defined by all of the members (nodes) and their corresponding relationships (edges). The graph servers 300 respond to requests from application server 200 to identify relationships and the degree of separation between members of the online social network. The application server 200 is further configured to process requests from a third party application 610 to provide social network information (e.g., the relationships between individuals) for user records main-

tained in a third party database 620. The third-party application 610 makes the requests to the application server 200 through an application programming interface (API) 600. The methods by which the social network information maintained in the system 100 is shared with a third party is described in detail in a commonly owned application, "Method of Sharing Social Network Information with Existing User Databases," (U.S. patent application Ser. No. 10/867,610, issued as U.S. Pat. No. 7,478,078), filed Jun. 14, 2004, the contents of which are hereby incorporated by reference.

FIG. 3 is a representation of the social network of FIG. 1 in a tree format starting with member B at the top and showing all members connected to B. Members P-U are not shown in FIG. 3 because they are not connected to B in the social network of FIG. 1. G and H are shown twice because each is connected to B through two different paths. C', E' and G' each collectively represents individuals who are identified in contact lists maintained by members C, E and G, respectively. These individuals typically are not members of the social network of FIG. 1. Other members also maintain contact lists, but for simplicity, it is assumed that only C, E and G have data stored in their contact lists. The contact list information includes name, address, telephone numbers, e-mail addresses, and similar types of information that are stored in contact management software such as Outlook® and ACT!®.

The present invention will be illustrated with the following four examples: (1) authorizing an individual to communicate with a member of the social network (by way of e-mail, instant messaging, text messaging, voicemail, and other similar means); (2) authorizing content made available by an individual to be transmitted to a member of the social network for viewing; (3) authenticating a member of the social network for access to online content; and (4) authenticating a member of the social network for access to a loan. In each of these examples, the decision on whether to authorize the information flow to B (examples 1 and 2), or to authenticate B for access to information or service (examples 3 and 4), will be based on a black list and B's social network.

A black list used in authorizing information flow to a member (examples 1 and 2), or in authenticating the member for access to a loan (example 4) is defined with respect to the member. In the example given here, a single black list is maintained for a member. However, the black list may be defined separately for different types of activity. For example, the black list used in authorizing e-mail communication to B may be different from the black list used in authorizing content made available by an individual to be transmitted to B for viewing.

A black list that is defined with respect to a member is typically updated by that member. For example, if B received an unwanted communication (e.g., SPAM) from D and L, or while browsing profiles of other members in the social network, came across D's content and L's content that B found to be offensive, B will add D and L to its black list. This black list is shown in FIG. 4.

A black list used in authenticating a member for access to online content or service (example 3) is defined globally with respect to everyone seeking access, but it is maintained separately for each different online content/service provider. For example, a black list used in authenticating a member for access to information or service made available by a provider ABC is different from a black list used in authenticating a member for access to information or service made available by provider XYZ. This type of black list is typically updated by the provider of the information or service. For example, if the black list shown in FIG. 4 is ABC's black list, this would

5

signify that ABC had previously determined that D and L abused their online access provided by ABC and added D and L to its black list.

A gray list is derived from a black list and the social network of the member with respect to whom authorization and authentication is being carried out. In examples 1, 2 and 4, the gray list is derived from the black list of member B and B's social network. In example 3, the gray list is derived from the black list of the provider of content or service to which member B is seeking access and B's social network. The gray list simply includes all members of B's social network who are one degree separated from any member of B's social network who is on the black list. The gray list derived from the black list of FIG. 4 and the social network of FIG. 1 would include C, I, J, F, and M, and is shown in FIG. 5.

Alternatively, the gray list may be limited to all members of B's social network who are: (i) one degree separated from any member of B's social network who is on the black list, and (ii) included in a path between the black list member and the member with respect to whom authorization and authentication is being carried out. The gray list derived in this manner would include members C and F, but not members I, J and M.

Individuals identified in the gray list of a member become non-traversing nodes with respect to that member. A "non-traversing node" with respect to a member is a node through which a connection to the member cannot be made. For example, referring to FIG. 3 and using the gray list of FIG. 5, a connection from B to E cannot be made because the path from B to E traverses through C, who is on the gray list and is a non-traversing node. The connection from B to C, on the other hand, can be made because the path from B to C ends at C and does not traverse "through" C.

FIG. 6 is a flow diagram that illustrates the steps carried out in authorizing an e-mail communication from A to B or authorizing transmission of A's content to B (e.g., in connection with delivery of search results in response to a search query by B). In Step 610, a black list that is maintained for B and used in authorizing e-mail communication with B is retrieved. In Step 620, the black list is searched for A. If A is identified in the black list, the information flow to B is prohibited (Step 670). Otherwise, a gray list is derived from the black list and B's social network (Step 630). In Step 640, a breadth first search (or alternatively, a depth first search) is conducted on B's social network to find paths from B to A. Optionally, the breadth first search could be limited to members who are within a maximum degree of separation value specified by the member (signifying that the member does not wish to receive communication from, or review content posted by, other members who are too far removed) or by the operator of the social network (as a way to conserve computing resources). If there is any path from B to A that does not pass through a non-traversing node (i.e., an individual in the gray list), the information flow to B is authorized (Step 660). Otherwise, the information flow to B is prohibited (Step 670).

In the example given above, the party that is providing the e-mail communication service and the search engine service and carrying out the authorizations is the operator of B's social network. The invention is applicable to situations where the party that is providing the e-mail communication service and the search engine service and carrying out the authorizations is a third party that has access to the database containing B's black list and information about B's social network. In such a case, the third party will retrieve B's black list and a graph representation of B's social network from this database in accordance with the methods described in the application, "Method of Sharing Social Network Information with Existing User Databases," (U.S. patent application Ser.

6

No. 10/854,610, issued as U.S. Pat. No. 8,478,078), filed Jun. 14, 2004. The third party carries out the remaining steps described above (Steps 620-670) in the same manner.

Also, a person who is not a member of B's social network may be permitted to communicate with B, if the person is identified in a contact list of a member who is not identified in the gray list and connected to B along a path that does not pass through a non-traversing node. For example, referring to FIG. 3, G' will be able to send e-mail to B because G' is identified in the contact list of G who is not identified in the gray list and none of the nodes connecting G to B are non-traversing nodes. By contrast, C' will not be able to send e-mail to B because C is identified in the gray list; and E' will not be able to send e-mail to B because the only path from E to B is through a non-traversing node (C).

In an alternative embodiment, a white list identifying all members of B's social network who are authorized to transmit content to B may be generated, either real-time or off-line as a batch process, and searched each time content transmission to B is attempted. The white list generated in this manner includes all members of B's social network who are connected to B along a path that does not traverse through a member identified in B's gray list, and e-mail addresses stored in the contact lists of members who are identified in the white list and not in the gray list. The white list can be further narrowed by limiting it to those members who are within a maximum degree of separation from B, where the maximum degree of separation may be specified by either B or the operator of the social network.

FIG. 7 is a flow diagram that illustrates the steps carried out in authenticating B for access to an online service provided by a third party. In Step 710, the service provider receives a request for access from B. The request includes certain identifying information of B, such as B's e-mail address. In Step 720, in accordance with the methods described in the application, "Method of Sharing Social Network Information with Existing User Databases," (U.S. patent application Ser. No. 10/854,610, issued as U.S. Pat. No. 8,478,078), filed Jun. 14, 2004, this service provider makes a request to a social network database for a graph representation of B's social network and receives the graph representation of B's social network. In Step 730, a black list that is maintained by this service provider is retrieved. In Step 740, a gray list is derived from the black list and B's social network. In Step 750, a breadth first search (or alternatively, a depth first search) is conducted on B's social network to generate a white list. All members of B's social network who are connected to B along a path that does not traverse through any unauthorized nodes (i.e., individuals identified in the gray list) get included on this white list. FIG. 8 shows the white list generated from B's social network shown in FIG. 3 if the gray list shown in FIG. 5 corresponds to the gray list derived in Step 740. If any individual identified in the white list is in the user database of this service provider (Step 760), B's online access is authenticated (Step 770). Otherwise, B's online access is denied (Step 780).

FIG. 9 is a flow diagram that illustrates the steps carried out in authenticating B for access to a loan. In Step 910, the lender receives a request for a loan from B. The request includes certain identifying information of B, such as B's e-mail address. In Step 920, in accordance with the methods described in the application, "Method of Sharing Social Network Information with Existing User Databases," (U.S. patent application Ser. No. 10/854,610, issued as U.S. Pat. No. 8,478,078), filed Jun. 14, 2004, this lender makes a request to a social network database for a graph representation of B's social network and receives the graph representa-

tion of B's social network. In Step 930, a black list that is maintained for B is requested and received from the social network database in the same manner as in Step 920. In Step 940, a gray list is derived from the black list and B's social network. In Step 950, a breadth first search (or alternatively, a depth first search) is conducted on B's social network to generate a white list. All members of B's social network who are connected to B along a path that does not traverse through any unauthorized nodes (i.e., individuals identified in the gray list) get included on this white list. Optionally, the lender may specify a maximum degree of separation value (e.g., N_{max}). If it is specified, the white list will include only those members of B's social network who are within N_{max} degrees of separation from B. In Step 960, the credit ratings of individuals in the white list are retrieved and weighting factors are applied to the credit ratings based on the degree of separation between the individual and B. As an example, a weighting factor of $1/10^N$ may be applied to the credit ratings, where N is the degree of separation between the individual and B. If the average credit rating is above a minimum score, B is authenticated and the processing of B's loan application is permitted to proceed (Steps 970 and 980). If not, B is not authenticated, and B's loan application is rejected (Steps 970 and 990).

The above examples of the white list, the black list, and the gray list store member identifiers (e.g., A, B, C, etc.) to identify members of the social network. Other identifying information, such as e-mail addresses, may be stored in these lists. In cases where the lists identify persons who are outside the social network, the e-mail address is stored in place of the member identifier. For example, a SPAM e-mail address, not corresponding to any e-mail address within the social network, may be added to a member's black list. Any future attempts to send e-mail from this e-mail address will be prohibited pursuant to the decision block in Step 620 of FIG. 6. Also, if the SPAM e-mail address added to the member's black list corresponds to an e-mail address stored in a contact list maintained by a person in the social network, the gray list that is derived from this black list will include the member identifier corresponding to the person who has the blacklisted e-mail address in his or her contact list.

While particular embodiments according to the invention have been illustrated and described above, those skilled in the art understand that the invention can take a variety of forms and embodiments within the scope of the appended claims.

What is claimed is:

1. A method comprising:

receiving, by one or more computing devices, a request to send to a first user content relating to a second user;

accessing, by the one or more computing devices, a graph structure comprising a plurality of nodes and a plurality of edges connecting the nodes, wherein:

each edge connects two nodes and represents a single degree of separation between them;

a first node corresponds to the first user; and
a second node corresponds to the second user;

determining, by the one or more computing devices, whether the first and second nodes are connected to each other in the graph structure through a path that comprises one or more unauthorized nodes identified in a gray list, the gray list being based on a black list; and

prohibiting, by the one or more computing devices, the content from being sent to the first user if the first and second user nodes are connected to each other in the graph structure through a path that comprises at least one unauthorized node identified in the gray list.

2. The method of claim 1 wherein:

the first and second nodes are connected to each other through a plurality of paths; and

the content is prohibited from being sent if any of the paths comprises an unauthorized node.

3. The method of claim 1, wherein all nodes in the graph structure that are separated from the second node by more than a threshold degree of separation are unauthorized nodes.

4. The method of claim 1, wherein determining whether the first and second nodes are connected to each other in the graph structure through a path that comprises an unauthorized node comprises accessing the black list comprising a first set of user IDs of a first set of users, wherein each node corresponding to a user in the first set of users is an unauthorized node.

5. The method of claim 4, wherein each node separated by only one degree of separation in the graph structure from at least one node corresponding to a user in the first set of users is an unauthorized node.

6. The method of claim 4, wherein each node separated by a threshold degree of separation in the graph structure from at least one node corresponding to a user in the first set of users is an unauthorized node.

7. The method of claim 4, wherein:

determining whether the first and second nodes are connected to each other in the graph structure through a path that comprises an unauthorized node further comprises accessing the gray list comprising a second set of user IDs of a second set of users;

the nodes corresponding to each of the users in the second set of users are separated in the graph structure from at least one of the nodes corresponding to the users in the first set of users by a threshold degree of separation; each node corresponding to a user in the second set of users is an unauthorized node.

8. The method of claim 7, wherein the threshold degree of separation is one, two, three, or all.

9. The method of claim 4, wherein the black list is maintained for either for first user or the second user.

10. The method of claim 1, wherein the content relating to the second user comprises an e-mail communication from the second user.

11. The method of claim 1, wherein the content relating to the second user comprises profile information of the second user.

12. The method of claim 1, wherein the content relating to the second user comprises content posted by the second user.

13. The method of claim 1, further comprising:

determining, by one or more computing devices, whether the first and second nodes are connected to each other in the graph structure through a path that comprises only authorized nodes; and

authorizing, by one or more computing devices, the content to be sent to the first user instead of prohibiting it if the first and second nodes are connected to each other in the graph structure through a path that comprises only authorized nodes.

14. The method of claim 13, wherein all nodes in the graph structure that are separated from the second node by no more than a threshold degree of separation are authorized nodes.

15. The method of claim 13, wherein determining whether the first and second nodes are connected to each other in the graph structure through a path that comprises only authorized nodes comprises accessing a white list comprising a third set of user IDs of a third set of users, wherein each node corresponding to a user in the third set of users is an authorized node.

16. A system comprising: one or more processors; and one or more computer-readable non-transitory storage media embodying software that is executed by one or more of the processors to:

receive a request to send to a first user content relating to 5
second user;

access a graph structure comprising a plurality of nodes
and a plurality of edges connecting the nodes, wherein:
each edge connects two nodes and represents a single
degree of separation between them; 10

a first node corresponds to the first user; and
a second node corresponds to the second user;

determine whether the first and second nodes are con-
nected to each other in the graph structure through a path
that comprises one or more unauthorized nodes identi- 15
fied in a gray list, the gray list being based on a black list;
and

prohibit the content from being sent to the first user if the
first and second user nodes are connected to each other in
the graph structure through a path that comprises at least 20
one unauthorized node identified in the gray list.

* * * * *